

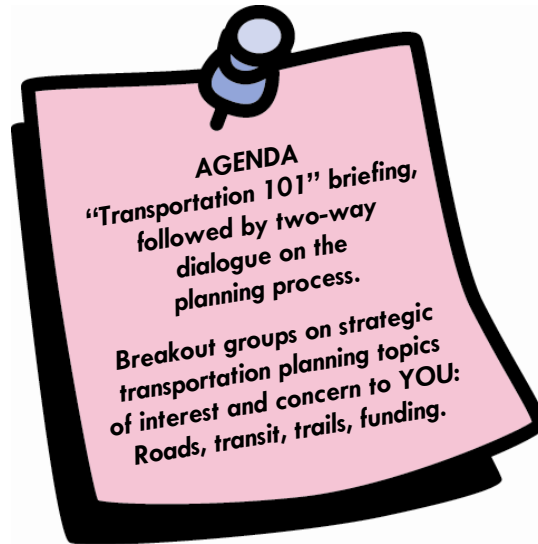


PLEASE COME, JOIN US:



The Prince George's County Planning Department (M-NCPPC) Invites You To Master Plan of Transportation (MPoT) Workshops

**Monday,
March 31, 2008
6:30–9:00 p.m.
Suitland High School
Cafeteria
5200 Silver Hill Road
Suitland, Maryland**



**Wednesday,
April 2, 2008
6:30–9:00 p.m.
Eleanor Roosevelt H. S.
Cafeteria
7601 Hanover Parkway
Greenbelt, Maryland**

Transportation affects us all. We need your input. Come, learn, and share your ideas and questions.

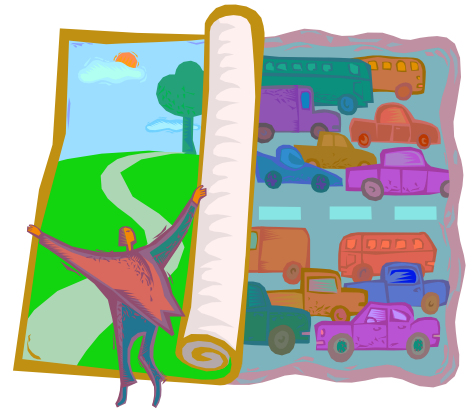
- ⇒ What strategies should be recommended to improve accessibility to transit?
- ⇒ What types of communities should transit be serving?
- ⇒ What is the process for funding roadway, transit, and bikeway improvements?
- ⇒ If we build it (a multimodal, convenient, bike- and pedestrian-friendly transportation network focused on transit-oriented, mixed-use development) will you come?
- ⇒ How and where should the Purple Line be extended beyond New Carrollton?
- ⇒ What are your ideas for trail connections to schools, parks, and other destinations?
- ⇒ How will this plan help me in my work commute? What are some future options for me?
- ⇒ Will I be able to ride my bike to National Harbor? ... or rail over the Woodrow Wilson Bridge?



For more information, see reverse side.



More Information on Locations of Master Plan of Transportation Workshops



Monday, March 31, 2008

Suitland High School Cafeteria
5200 Silver Hill Road
Suitland, MD 20747

Accessible by Metrorail, MetroBus, and The Bus

1. Take Metrorail Green Line to Suitland Metro Station.
2. Take The Bus 34 (Whitehall Square Apts.)
Or the P12 MetroBus (Addison Rd.)
Or the K12 MetroBus (Branch Ave. Station)



Wednesday, April 2, 2008

Eleanor Roosevelt High School Cafeteria
7601 Hanover Parkway
Greenbelt, MD 20770

Accessible by Metrorail and The Bus

1. Take Metrorail Green Line to Greenbelt Metro Station.
2. Take The Bus 16 (New Carrollton Station)
Or The Bus 15 (NASA)

Sponsor: The Maryland-National Capital Park and Planning Commission

Please RSVP by e-mailing us at MPOT@ppd.mncppc.org. You can also use this e-mail address or the mailing addresses below to join our mailing list, send your comments on the MPoT if you can't attend a workshop, or to request a presentation at your community organization meeting.

Visit our web site at http://www.mncppc.org/county/Transportation_MP

Fatimah Hasan, AICP
MPoT Public Outreach Coordinator
Prince George's County Planning Department
Countywide Planning Division
14741 Gov. Oden Bowie Drive
Upper Marlboro, MD 20772
Phone: 301-952-3580 Fax: 301-952-3799

or

Harold Foster, AAG, AICP
MPoT Project Manager
Prince George's County Planning Department
Countywide Planning Division
14741 Gov. Oden Bowie Drive
Upper Marlboro, MD 20772
Phone: 301-952-4947 Fax: 301-952-3799