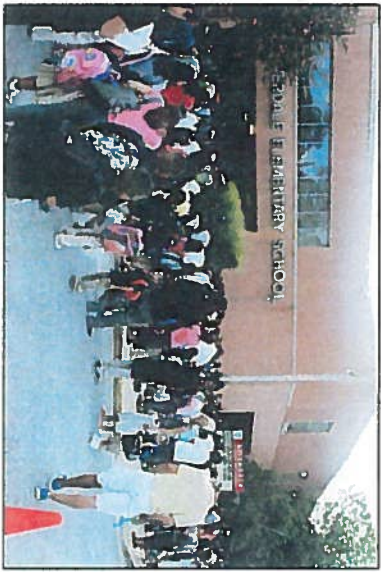


Pick Up/Drop Off Area and Parking

The changes to the pick up area and parking will alleviate the traffic congestion for parents, teachers, and the community while creating for safer student dismissal. Below is the current pick up area.

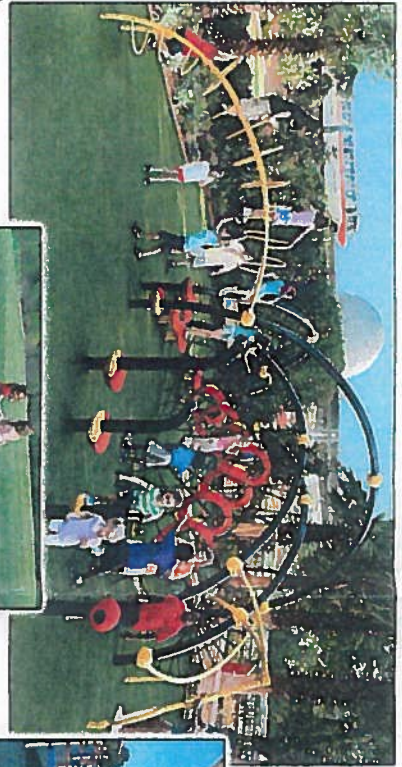


TEMPORARY CLASSROOMS

Relocating two of the temporary classrooms consolidates the learning into one area and creates the opportunity to provide more parking and an efficient pick up/drop off area.

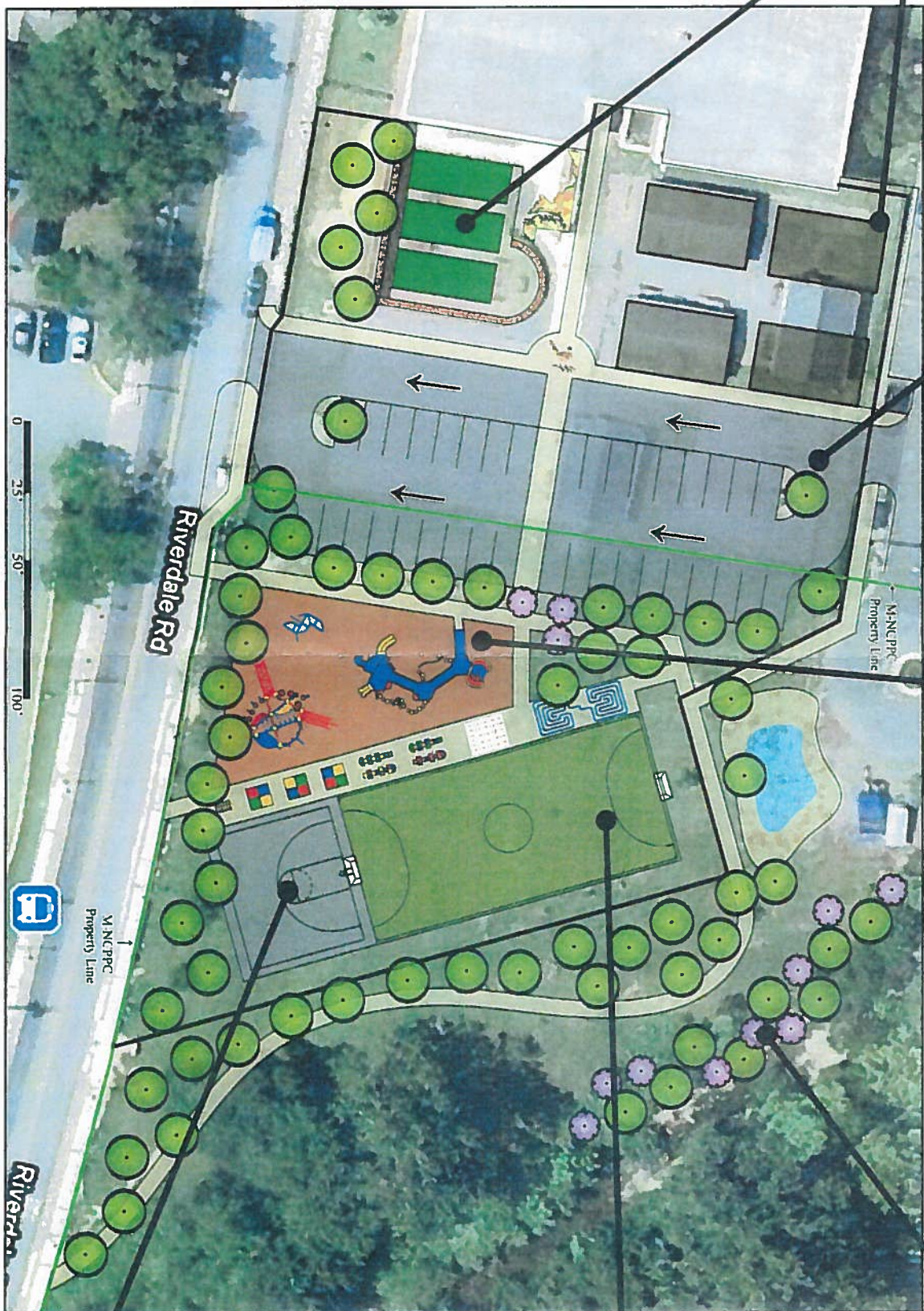
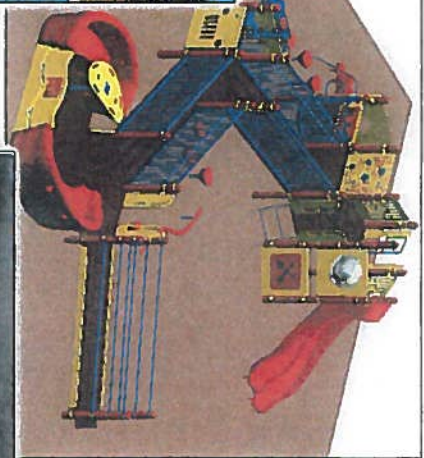
OUTDOOR CLASSROOM

The outdoor classroom will consist of a seat wall for students, a map of Maryland, and three raised gardens that highlight the plant material in Maryland's Coastal Plain, Piedmont Plateau, and Appalachian Region.



PLAYGROUND AND SIDEWALK GAMES

The new playgrounds with provide entirely ADA accessible equipment for children from age 2 to age 12. The equipment for the 5-12 year old children is more challenging and athletic, while the equipment for the younger children provides a number of interactive panels and a glider for multiple people will all abilities.



STREAM BUFFER

It is expected a stream buffer will be required for permits. However, this is an opportunity to extend outdoor learning to the stream and provide an amenity for the community.



FUTSAL COURT

Futsal is essentially, a scaled down version of outdoor soccer played indoors. It is a small sided game (5v5) played on a smaller field (roughly basketball court sized). This spot is becoming more popular in the community.



BASKETBALL HALF COURT

This half court will provide a space for children to participate in skill workouts and play against one and other, while not appealing as much to adults (who typically dominate the court).

